

Digital Music Changer

YT-M06

User Manual

English

YATOUR[®]

I Product Introduction

Yatour Digital Music Changer is a revolutionary replacement of CD Changer. It can be easily installed and used. It delivers CD quality sound directly into car stereo system via CD Changer Port, without loss of sound quality that occurs with existing cassette and FM transmitter solutions.

Yatour Digital Music Changer supports direct controls from car radio panel, and multi-function steering wheel remains fully operational. With built-in USB slot and SD Card slot, users only need a SD/SDHC/MMC card or USB stick, then they can enjoy MP3/WMA in the car with optimum sound quality. Combining AUX IN slot as well, it provides car owners access to more audio sources.

All in all, car owners are able to enjoy the abundance of CD-quality music via Yatour Digital Music Changer. It is your best choice of upgrading current car stereo system.

II Accessories



Module Unit



Wire Harness



3.5mm AUX Cable

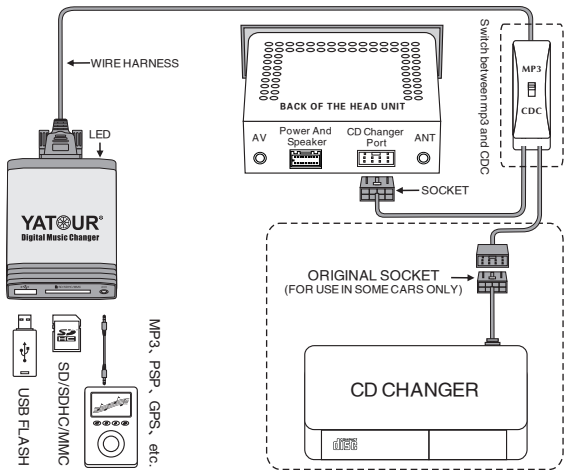


User Manual

III Installation Diagram

Important Note:

- The product only operates on a vehicle with 12 Volt DC, negative ground system. Do not use it on other voltage system.
- The product is only fit for vehicles whose Head Unit, either factory fitted radio or aftermarket car radio, is equipped with CD changer port.
- Moreover, different solutions of Digital Music Changer would be adopted according to different brand of vehicles or different car radios.



NOTE: MP3/CDC Switch Cable is optional, Available for some vehicles only.

IV Installation Guide

Important note :

- Before installation, please carefully read the User Manual. To guarantee user interests, it is suggested that the product be installed by professional staff.
- Some vehicles require the special tools to remove the radio. Pls consult your vehicle's dealership or car audio professional if necessary.

1. Turn off car engine and remove key from ignition, If your radio uses a Security Code, make sure that you have the code before unplugging the radio.
2. Unmount the radio from the dash in order to get access to the back side of the radio, and find CD Changer port at the back of the radio.

3. Attach the wire harness connector to the back of the stereo to the CD changer port. Be sure to make a firm connection but do not force it.
4. Once the Yatour is connected to the radio, you will need to test the operation of the interface before re-assembling the dash. Insert SD card or USB flash stick, and power on the Head Unit, then press CD (or Disc / Mode / CDC / SOURCE / AUX) button for once or twice to switch to playback mode of Digital Music Changer, with the symbol of LED light being on. Meanwhile, CDC, EX, or CD01 will display on the radio screen (depending on the car stereo type). Now the Digital Music Changer will run normally.
5. After successful test, re-assemble the radio, and put wire harness and module unit box in proper place. Then installation is completed. If you experience difficulties with the installation, please check our troubleshooting section of this manual.

■ Important Note :

1. If there is a BLACK ground wire on the harness, please attach it to any metal part of the car stereo body; If there is a YELLOW power wire on the harness, please attach it to the power of the car, which connect to battery; If there is a RED ACC wire on the harness, please attach it to the ACC signal of the car. Without attaching those cables to the right position, this Digital Music Changer will not work!
2. As to some vehicles with existing CD Changer, Parallel Harness or MP3/CDC Switch Cable will be provided. This allows Digital Music Changer to hook up with existing CD Changer. Simply connect the existing CD Changer to the male connector of Digital Music Changer.
3. Regarding Fiat, Renault models, two black wires with metal ends (male+female) come along with CDC connector. If noise problem exists when using Digital Music Changer, please hook up the two grounding wires with each other.
4. As for Audi factory radio of mini ISO 8 pin, its CDC connector is 20-pin block connector, in order to install Yatour, it requires to cut the 8-pin part or connect with our special Audi 20-pin adapter cable.
5. As for Clarion protocol radios, such as some BUICK radio and SUZUKI radio, it requires to totally unplug the wire harness before installation, in order to power off the electric supply. If not, it would probably cause

Yatour not to work, or radio screen flickering.

6. As for installation on CAN-Bus radios of Peugeot/Citroen, Renault, Ford(new) and Mazda(new), it is required to unplug the radio from the power before installation. Otherwise, Digital Music Changer might work improperly or the radio might be caused damage. Regarding Peugeot/Citroen without pre-installed CD Changer, to enable Digital Music Changer to work, the CD Changer function must be activated by professional tools. Please enquire the Peugeot/Citroen dealer on how to activate the CD Changer function.
- 7 As per BMW radios with CD Changer, the CD Changer must be completely disconnected before installation (The 3-pin and the 6-pin connector, both are located in the trunk, must be disconnected), otherwise, Yatour will not be recognised. Besides, if the BMW radios are with DSP, extra DSP kit and specific Yatour would be used.

V Functions and Usage Preparation

■ Application Range:

Yatour is compatible with the following factory fitted radios, such as Toyota, Lexus, Honda, Acura, VW, Skoda, Audi, Porsche, Mazda, Nissan, Hyundai, KIA, Suzuki, Mercedes, BMW, Peugeot, Citroen, Ford, etc. And also compatible with aftermarket car radios, such as Alpine, Becker, Blaupunkt, Clarion, Pioneer, Sanyo, Sony, JVC. The list might be updated, please check with the supplier for updating details.

■ Applicable Storage Device:

SD Card slot of Digital Music Changer supports SD/SDHC/MMC card, while USB slot supports USB2.0 powered devices, such as USB Drive disk, mobile Hard Drive, USB card reader, etc. Digital Music Changer can support up to 16GB, for both USB flash stick and SD/SDHC card.

■ Supported Music File:

Yatour can support MP3 and WMA. So as to enjoy optimum sound quality, it is suggested that you play music file of high compression ratio.

■ Supported Folder & Track Quantity:

Yatour can support up to 99 folders, every folder can save up to 99 files

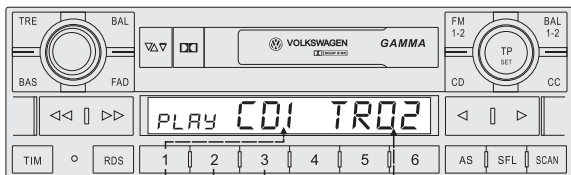
(You can save up to 1000 music files, but If your radio only can display a maximum of two digits for track number. Track number 100 will be displayed as 01, track 101 as 02, track 102 as 03...). But most OEM radios can only identify 6-10 folders.

■ Music File Saving & Playing Mode:

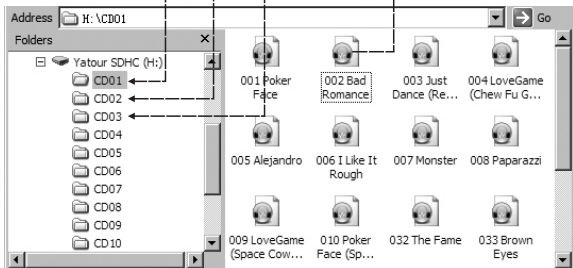
Yatour supports multi-folder playback. To access the music, it is important that the music has been saved/organised into folders which are named CD01, CD02, CD03...CD99. When playback, CD01, CD02, CD03...CD99 will correspondingly display on radio panel screen. If there is no folder named "CD0X", all folders and tracks/songs will be recognized as only one virtual CD disk. Any folder or music file not named as per the above-mentioned rule will not be recognised or played.

Just take the following fig. as a showing example.

The Radio Panel:



The setting of storage device:



The naming of the tracks/songs is unrestricted, and the playing order is in line with the time that music files are saved on the SD card or USB stick. Besides, please do not save music files in the folders of the sub directory, otherwise, music files cannot be identified or recognized.

■ **AUX IN:**

AUX IN port is used to load auxiliary audio equipment, such as MP3 player, PSP, iPod/iPhone, via 3.5mm jack plug into the head unit. Please remove the USB disk/SD card from Digital Music Changer before you use the AUX IN, as USB disk/SD card playback will not automatically stop. You can only adjust the volume via head unit when in AUX playback status.

■ **Last Position Memory:**

Digital Music Changer supports memory playback, once you power off the engine, or you select another type of playbacks from CD or AM/FM, it will memorize the disc number and track number to MCU, when you return to the playback status of Digital Music Changer, it will continue playing from the MCU memorized point. However, music playing tracks via AUX IN do not support Last Position Memory.

■ **Scan/Random/Repeat:**

You can control playback with several functions. These functions are generally cancelled when you press select "FM/AM" buttons or power off the radio or ACC.

SCAN

Press the "scan" button, each track in the current folder play for 10 seconds.

Random (Shuffle)

Press the "RDM" (or "P scan", "Shuffle") random button once or twice, songs or folders will playback in random order.

Repeat

The "Repeat" button can be used to repeat playback of a single song.

■ **Other Functions**

Press the "NEXT" button to skip to the next track in the folder. Press the

"PREV" button to go to the beginning of the track that is being played. Press the track down button twice to go to the previous track. Press the fast forward or fast reverse button can be used to seek within a single song.

VI Other Operation instruction

1. Before use, it is suggested that you format SD card or USB2.0 powered device with FAT16/FAT32 format, and then save your favorite music tracks in the device, and please name the folders according to the above-mentioned naming rules.
2. For the first-time use of Digital Music Changer, it requires to press CD(or DISC/Mode/CDC/SRC/AUX) button for once or twice to switch to CD changer mode, then it starts running Digital Music Changer.
3. The LED indicating light is on when Digital Music Changer starts working, and it takes 3-10 seconds to load music files before starting playback. If the car radio is turned on but not working and the LED indicating light is not on, the car radio would probably not be powered on, or Digital Music Changer is not connected properly. Once switching to FM or the Head Unit is OFF, Digital Music Changer would stop working, and LED indicating light would go off.
4. The operation of Digital Music Changer is nearly equal to that of the factory fitted radio, but some button functions of some factory radios might be altered. However, this alteration would not affect the functions of the factory radio or existing CD changer.
5. When playback of all tracks in one folder is finished, the first track in next folder will start playing automatically.
6. If the track up or track down button is pressed quickly in repetition, the track numbers displayed may change unevenly.
7. For most vehicles, to switch between original CD radio and Digital Music Changer, please press CD button for once or twice, exactly same operation to original car stereo.
8. For VAG vehicles, Parallel Harness (without MP3/CDC switch) is provided, when you are using Yatour and want to switch to existing CD

Changer, press FM/AM or other audio playback mode button, then press CD button to switch to existing CD Changer. And vice versa.

9. MP3/CDC Switch Cable is provided for existing CD Changer on vehicles except for VAG cars. Power off your radio or vehicle and switch between MP3(Yatour) and CDC (Original CD changer). For some vehicles, you may need to restart the radio for once after operation on MP3/CDC Switch.

VII Common Troubleshooting

1. Digital Music Changer doesn't work after installation.

Please check whether the wire harness is correctly connected. And if there is GND wire(for some car models), please check whether it connects well with metal parts of car radio.

2. After installation, I pressed CD button for switch, it can switch to MP3 playback status, but only one CD folder works, how should I do?

This problem is probably caused by improper folder structure you saved/organised in USB device/SD card. Please follow the rules as above-stated, to access the music, it is important that the music has been saved/organised into folders which are named CD01, CD02, CD03...CD99. Otherwise, all tracks/songs will be recognised as only one virtual CD disk.

3. When auxiliary audio device is connected via AUX IN slot, I can still hear music sound from USB device, how to do with this?

Please then remove the USB device/SD card from Digital Music Changer before you use the AUX IN, otherwise, USB device/SD card playback will not automatically stop.

4. When playing tracks from AUX device, it is running quite well, but cannot be controlled by head unit, either tracks or CD folders cannot be switched, what can I do?

AUX is an external audio input, you can only adjust the volume via head unit when in AUX playback status. It is normal that you cannot switch tracks or CD folders. So if you need full-function control via head unit, please replace AUX with SD card or USB flash stick.

5. My car has a CD changer already, and I want to install Digital Music Changer, how can I do?

As to part of the cars equipped with existing CD Changer, we can offer Parallel Harness, which allows Digital Music Changer to hook up with the existing cd Changer. There is a Switch for CDC and MP3 conversion, thus you could choose to play Digital Music Changer or CD Changer as you like. However, please note Parallel Harness is not available for all cars.

6. My car original stereo has only Cassette, can I connect Digital Music Changer to my car stereo?

It depends on whether there is extra CD changer port for Digital Music Changer, but has nothing to do with whether the head unit is CD or Cassette.

VIII Specifications

Voltage Input : 11V~14.6V DC

Standby Current : 3mA

DAC Resolution : 20bit

SN Ratio : 90dB

Operational Current : 200mA

Operating Temperature: -35°C~+85°C

Total Harmonic Distortion : 0.05%

Frequency Response : 20HZ-20KHZ

IX Warranty

All the items are guaranteed against manufacturing defects for a period of twelve months from purchase.

💡 Important Note:

- The hardware and software along with the function setting are subject to change without prior notice.
- For more information about our products, technology and the usage technique, please visit our website at www.yatour.net.
- The trade marks and brands therein are protected by the law.